

**TOGETHER WE CAN!**



# **TOURETTE SYNDROME**

*Enhancing Neuroimaging Genomics  
through Meta-analysis*

**ENIGMA-TS is an international collaboration to understand the cause of Tourette Syndrome and work towards individualized patient care.**

**RESEARCHERS FROM AROUND  
THE WORLD ARE JOINING  
FORCES TO STUDY BRAIN  
STRUCTURE AND FUNCTION IN  
TOURETTE SYNDROME AND  
RELATED DISORDERS.**



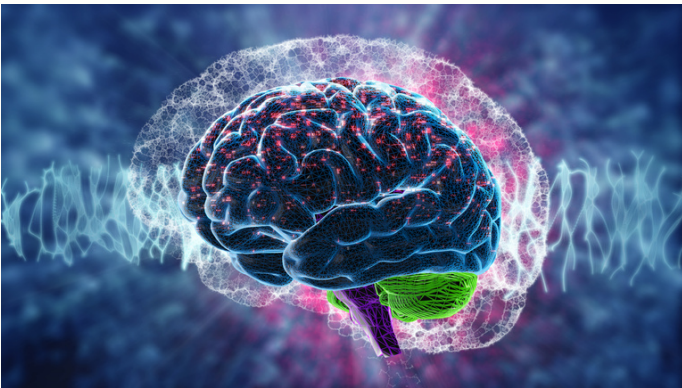
# ENIGMA-TS

MEMBERS GAIN ACCESS TO OUR JOINT RESOURCES AND  
DATABASE!

Initial goal: Meta-analysis of structural brain MRI and rsfMRI  
data for 1,000 patients.

## JOIN NOW IF YOU

- would like to work with us on uncovering the cause of Tourette Syndrome and help in improved diagnosis and management.
- can contribute previously collected data on Tourette Syndrome neuroimaging (raw data or summary statistics for meta-analysis).
- are planning to begin collection of Tourette Syndrome neuroimaging data.



[Kirsten Müller-Vahl](#), Hannover Medical School, Germany

[Renata Rizzo](#), University of Catania, Italy

[Nanette Mol Debes](#), University of Copenhagen, Denmark

[Pieter Hoekstra](#), University of Groningen, Netherlands

[Veit Roessner](#), Technical University of Dresden, Germany

[Pablo Mir](#), Seville Institute of Biomedicine, Spain

[Odile van den Heuvel](#), VU University, Netherlands

[Irene Neuner](#), RWTH Aachen University, Germany

[Harald Möller](#), Max Planck Institute, Germany

[Valerie Brandt](#), University of Southampton, UK

[Tim Silk](#) - Deakin University, Australia

[Richard Musil](#), Ludwig-Maximilians-University of Munich, Germany

[Katarzyna Lewandowska](#), [Tomasz Wolanczyk](#), [Piotr Janik](#);  
Medical University of Warsaw, Poland

[Julius Verrel](#), University of Lübeck, Germany

[Heike Eichele](#), University of Bergen, Norway

[Colleen Hanlon](#), Medical University of South Carolina, USA

[Christos Ganos](#), Charité University Clinic Berlin, Germany

[Chencheng Zhang](#), Shanghai Research Center for Brain  
Science and Brain-Inspired Intelligence, China

[Paul Thompson](#), [Neda Jahanshad](#), [Sophia Thomopoulos](#);  
University of Southern California, USA

[Kevin Black](#), Washington University St Louis, USA

Scan below or [click here to find out more](#) and join!



For questions email  
**Peristera Paschou**  
[ppaschou@purdue.edu](mailto:ppaschou@purdue.edu)

May 2022

**COORDINATOR:** [PERISTERA PASCHOU, PURDUE UNIVERSITY, USA](#)  
SUPPORTED BY THE NATIONAL INSTITUTE OF MENTAL HEALTH, USA